

ORIGAMI STARSHADE

Use this classic origami method to craft a model of the optical shield that may someday help NASA capture images of planets outside our solar system. Scan this QR code or visit natgeo.com/starshade to access and print additional templates.

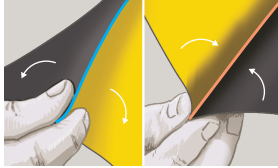


 NATIONAL
GEOGRAPHIC

ALBERTO LUCAS LÓPEZ, NGM STAFF;
LAWSON PARKER; MATTHEW TWOMBLY
SOURCE: NASA/JPL-CALTECH

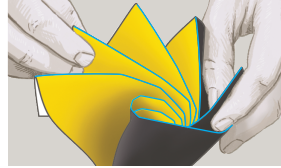
1 Cut and crease

Cut along dotted lines and crease along fold lines. **Blue lines** are "mountain folds" that rise up. **Orange lines** are "valley folds" that point down. Gently run a pencil or fingernail along fold lines to help with creasing.



2 Fold and gather

Once all lines are creased, fold along all fold lines, moving from the center outward. Lines will fold 180 degrees. Hold the central, base hexagon flat while rotating and gathering the folds into a spiral shape.



3 Furl and unfurl

This folded model represents a starshade's inner-disk optical shield when it's stowed before launch. Open and close the starshade by pulling opposite edges of the sheets apart, then pushing them back together.

